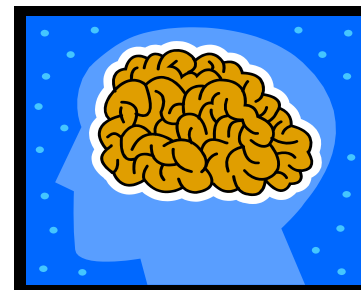


PSIM: Vital Component of an Enterprise Security Strategy



Big Ear, Little Brain = Reactive Posture



Inability to Integrate Critical Information

THE
9/11
COMMISSION
REPORT

FINAL REPORT OF THE NATIONAL COMMISSION ON
TERRORIST ATTACKS UPON THE UNITED STATES



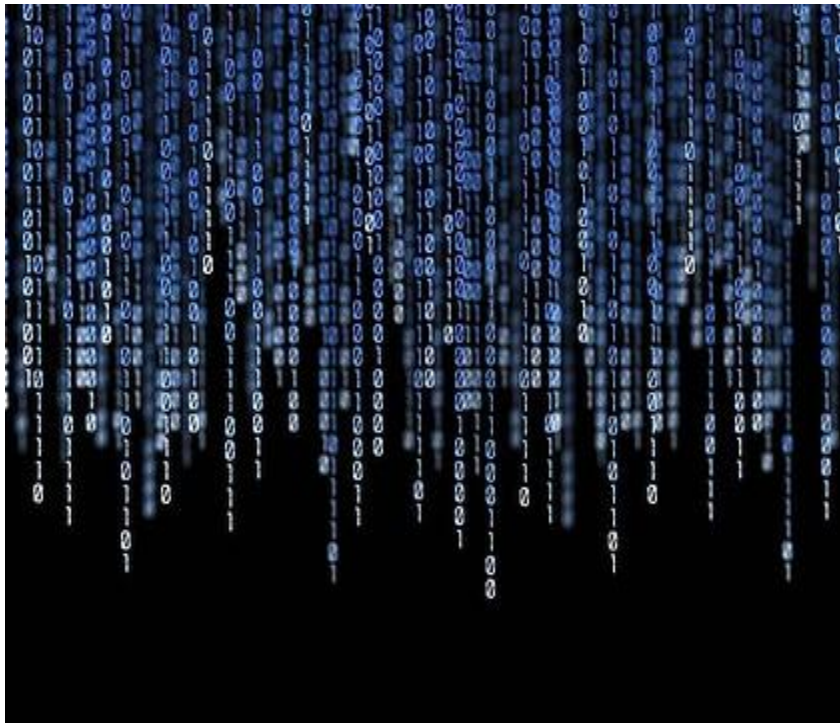
- World Trade Center 1993
- Bojinka Plot
- Minneapolis
- Arizona
- Meeting in Manila
- San Diego safe house
- Traffic stops
- Agency info
- Intelligence “chatter”

Jessica Lunsford Kidnapping



- Convicted sex offender John Couey lived within sight of her home
- Couey kept Jessica Lunsford bound inside his bedroom closet for at least three days
- Officers visited Couey House while Lundford was held Inside
- Couey hadn't shown for a probation meeting

“Big Data” Underutilized in Corporate Security



Why Can't We Use 'Big Data' To Protect Corporate Assets?

Current uses

- Marketing
- Business intelligence
- Fraud detection

“Silos of Excellence” hinder cohesive response; PSIM makes them work!



PSIM Brings Data Together: Ability to Predict and Prevent

- Integrate /analyze information from all sources
- Identify “crown jewels”
- Identify threats/risks & prioritize
- Implement prevention strategy



Threat Analysis: Providing Context For Informed Response

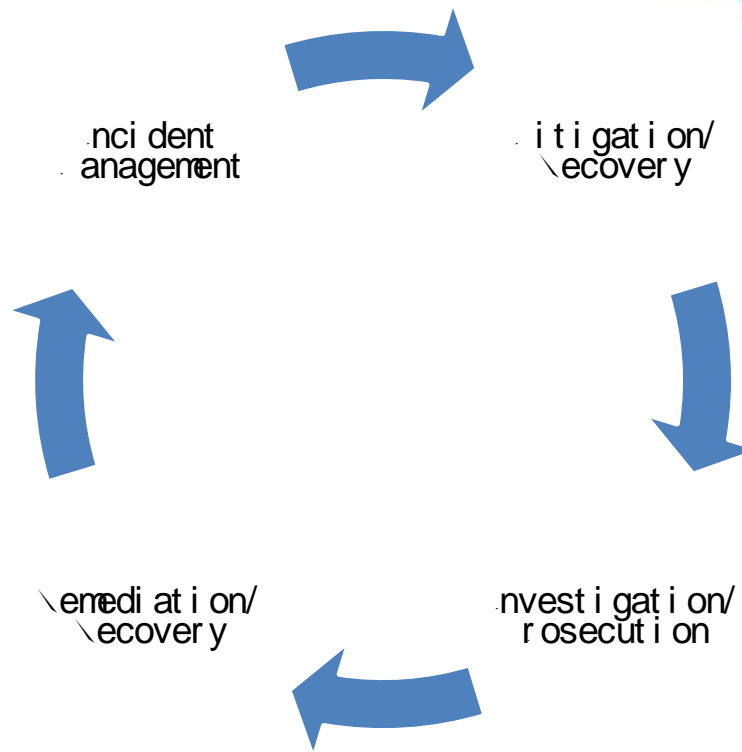


Incident Management: Virginia Tech



Incident Analysis

- Measure Results
- Feedback Loop



Intelligence Cycle

- Identify information needs and gaps
- Proactively gather information
- Break down information silos/integrate data
- Analyze/report/draw conclusions/establish goals
 - Reduce events
 - Predict events
 - Effective management of events
 - Minimize impact of incidents
- Enhance SOP

Success Measures: Incident Reductions

- Bank robberies reduced over 50%
- ATM burglaries losses/damage virtually eliminated



Internal Sources

- Security staff/guards
- Vendors
- Employees
- Cameras
- It system
- Access control
- Property managers
- Incident reports



Internal Sources

- USG info sharing initiatives
- PSLC
- Fusion centers
- Subscription services
- Security associations
- CAP Index
- GEO mapping



Best Practices

- Consolidate command post/control centers whenever possible
- Hire and train analysts
 - Specialty areas of responsibility – Travel; Protest Groups; Specific Threats
 - Info Sharing Initiatives
- Intelligence/threat communications
 - Who needs to know; Who wants to know
- Collocate security technology; facilitates/workplace control center; cyber control center and business continuity component
- Utilize tools such as PSIM to facilitate information sharing, improve response, and analysis to predict/prevent



CELAES 2012

THANK YOU!

Chris Swecker

Attorney/Consultant

chris.swecker@gmail.com